

**Instructions to Voter:
To Vote: completely
darken the box to the
left of your choice.
Please use a black or
blue ink pen only.**

Correct

Incorrect



- Note the permitted number of choices directly below the title of each candidate office. Do not mark the ballot for more choices than allowed.
- If you mark the ballot for more choices than permitted, that contest or question will not be counted.
- To vote for a write-in candidate: completely darken the box to the left of the blank line and write in the candidate's name. Only votes cast for candidates who filed as write-in candidates can be counted.
- Do not write-in a candidate's name if that person's name is already printed on the ballot for that same contest.
- If you make a mistake or want to change your vote: return your ballot to an election official and get a new ballot. You may ask for a new ballot up to two times.

**Instructions to Voters for
Governor and Lieutenant
Governor: To vote for
Governor and Lieutenant
Governor, darken the box
at the left of the joint
candidates of your choice.**

**For Governor and Lieutenant
Governor**

(Vote for not more than 1)

Amy Acton and David
Pepper

For Attorney General

(Vote for not more than 1)

Elliot Forhan

John J. Kulewicz

For Auditor of State

(Vote for not more than 1)

Annette Blackwell

For Secretary of State

(Vote for not more than 1)

Bryan Hambley

Allison Russo

For Treasurer of State

(Vote for not more than 1)

Seth Walsh

**For Justice of the Supreme
Court (Full term
commencing 1-1-2027)**

(Vote for not more than 1)

Marilyn Zayas

**For Justice of the Supreme
Court (Full term
commencing 1-2-2027)**

(Vote for not more than 1)

Jennifer Brunner

**For U.S. Senator (Unexpired
term ending 1-3-2029)**

(Vote for not more than 1)

Sherrod Brown

Ron Kincaid

**For Representative to
Congress (1st District)**

(Vote for not more than 1)

Greg Landsman

Damon Lynch IV

**For Representative to
Congress (8th District)**

(Vote for not more than 1)

Vanessa Enoch

Madaris Grant

**For State Senator (7th
District)**

(Vote for not more than 1)

Cara Jacob

**For State Senator (9th
District)**

(Vote for not more than 1)

Catherine Ingram

**For State Representative
(24th District)**

(Vote for not more than 1)

Dani Isaacsohn

**For State Representative
(25th District)**

(Vote for not more than 1)

Cecil Thomas

**For State Representative
(26th District)**

(Vote for not more than 1)

Ashley Bryant Bailey

**For State Representative
(27th District)**

(Vote for not more than 1)

Rachel Baker

**For State Representative
(28th District)**

(Vote for not more than 1)

Karen Brownlee

Read Both Sides of the Ballot

**For State Representative
(29th District)**
(Vote for not more than 1)
 Jonathan R. Bradner

**For State Representative
(30th District)**
(Vote for not more than 1)
 Caleb Price

**For Member of State Central
Committee, Man (7th
District)**
(Vote for not more than 1)
 Joshua Hendrickson
 William H. Wentz

**For Member of State Central
Committee, Man (8th
District)**
(Vote for not more than 1)
 Pavan V. Parikh

**For Member of State Central
Committee, Man (9th
District)**
(Vote for not more than 1)
 Mark Mallory
 Patrick Reagan
 Antonio M. Sanders, Jr.

**For Member of State Central
Committee, Woman (7th
District)**
(Vote for not more than 1)
 Kristin Malhotra

**For Member of State Central
Committee, Woman (8th
District)**
(Vote for not more than 1)
 Bonnie Dunkelman
 Theresa Harper
Kolodzik

**For Member of State Central
Committee, Woman (9th
District)**
(Vote for not more than 1)
 Alicia Reece

**For Judge of the Court of
Appeals (1st District) (Full
term commencing 2-9-2027)**
(Vote for not more than 1)
 Ginger S. Bock

**For Judge of the Court of
Common Pleas (Full term
commencing 1-1-2027)**
(Vote for not more than 1)
 Donte Johnson

**For Judge of the Court of
Common Pleas (Full term
commencing 1-2-2027)**
(Vote for not more than 1)
 Christian A. Jenkins

**For Judge of the Court of
Common Pleas (Full term
commencing 1-4-2027)**
(Vote for not more than 1)
 Bill Gallagher
 Chris Wagner

**For Judge of the Court of
Common Pleas (Full term
commencing 2-9-2027)**
(Vote for not more than 1)
 Jennifer Branch

**For Judge of the Court of
Common Pleas (Full term
commencing 2-10-2027)**
(Vote for not more than 1)
 Alan C. Triggs

**For Judge of the Court of
Common Pleas (Full term
commencing 2-11-2027)**
(Vote for not more than 1)
 Latoya S. Maley

**For Judge of the Court of
Common Pleas (Full term
commencing 2-12-2027)**
(Vote for not more than 1)
 Wende C. Cross

**For Judge of the Court of
Common Pleas (Full term
commencing 2-13-2027)**
(Vote for not more than 1)
 Alison Hatheway

**For Judge of the Court of
Common Pleas (Drug Court)
(Full term commencing
1-3-2027)**
(Vote for not more than 1)
 Nicole L. Sanders

**For Judge of the Court of
Common Pleas (Probate
Division) (Full term
commencing 2-9-2027)**
(Vote for not more than 1)
 Elizabeth A. Tye

**For Judge of the Court of
Common Pleas (Juvenile
Division) (Full term
commencing 2-14-2027)**
(Vote for not more than 1)
 Kari L. Bloom

**For Judge of the Court of
Common Pleas (Dom Rel)
(Full term commencing
7-1-2027)**
(Vote for not more than 1)
 Tiffany Evans

**For Judge of the Court of
Common Pleas (Unexpired
term ending 1-3-2029)**
(Vote for not more than 1)
 Sarah Henry
 Glenda A. Smith

**For Judge of the Court of
Common Pleas (Unexpired
term ending 1-14-2029)**
(Vote for not more than 1)
 Manisha Kotian

For County Commissioner
(Vote for not more than 1)
 Stephanie Summerow
Dumas
 Herman Najoli
 Meeka Owens

For County Auditor
(Vote for not more than 1)
 Jessica E. Miranda

**For Member of County
Central Committee
CINCINNATI 1-A**
(Vote for not more than 1)
 Karen B. Wachs

**For Member of County
Central Committee
CINCINNATI 1-B**
(Vote for not more than 1)
 Cindy Cromwell

**For Member of County
Central Committee
CINCINNATI 1-C**
(Vote for not more than 1)
 Michael J. Lacinak
 Natalia Tooley

**For Member of County
Central Committee
CINCINNATI 1-D**
(Vote for not more than 1)
 Faith Nixon

**For Member of County
Central Committee
CINCINNATI 1-E**
(Vote for not more than 1)
 Wade Johnston
 Cornelia Miller
 Maria Yunker

**For Member of County
Central Committee
CINCINNATI 1-F**
(Vote for not more than 1)
 Bryna Bass
 Greg Landsman

**For Member of County
Central Committee
CINCINNATI 1-G**
(Vote for not more than 1)
 Alex Linser
 Cyan Xena Perez

**For Member of County
Central Committee
CINCINNATI 1-H**
(Vote for not more than 1)
 Eleonora Fusco
 Anthony Stevens

**For Member of County
Central Committee
CINCINNATI 1-I**
(Vote for not more than 1)
 Kenneth Dressler
 Nick Gomez-Kling

**For Member of County
Central Committee
CINCINNATI 1-J**
(Vote for not more than 1)
 Bobbi Dillon

**For Member of County
Central Committee
CINCINNATI 1-K**
(Vote for not more than 1)
 Nicha A. Zingarelli

**For Member of County
Central Committee
CINCINNATI 1-L**
(Vote for not more than 1)
 Ilana Linder

**For Member of County
Central Committee
CINCINNATI 1-M**
(Vote for not more than 1)
 Timothy M. Burke

**For Member of County
Central Committee
CINCINNATI 2-A**
(Vote for not more than 1)
 Louis J. Tye

**For Member of County
Central Committee
CINCINNATI 2-B**
(Vote for not more than 1)
 Marjorie A. Moseley

**For Member of County
Central Committee
CINCINNATI 2-C**
(Vote for not more than 1)
 Marie B. O'Reilly
 Colleen M. Reynolds

**For Member of County
Central Committee
CINCINNATI 2-D**
(Vote for not more than 1)
 Kate Botos

**For Member of County
Central Committee
CINCINNATI 2-E**
(Vote for not more than 1)
 Natalie R. Wolf

**For Member of County
Central Committee
CINCINNATI 2-F**
(Vote for not more than 1)
 Brent Edwards
 Indika Ekanayake

Read Both Sides of the Ballot

For Member of County Central Committee CINCINNATI 2-G
(Vote for not more than 1)
 Kelly Patterson

For Member of County Central Committee CINCINNATI 2-H
(Vote for not more than 1)
 Adrienne Nicole Collins

For Member of County Central Committee CINCINNATI 2-I
(Vote for not more than 1)
 Anna Albi
 Cara M. Daggitt

For Member of County Central Committee CINCINNATI 2-J
(Vote for not more than 1)
 Antonio M. Sanders II

For Member of County Central Committee CINCINNATI 3-A
(Vote for not more than 1)
 Samuel M. Burbanks IV

For Member of County Central Committee CINCINNATI 3-B
(Vote for not more than 1)
 Jens Sutmoller
 Theodore G. Winger

For Member of County Central Committee CINCINNATI 3-C
(Vote for not more than 1)
 Michele Lamb
 Julia Sellers

For Member of County Central Committee CINCINNATI 3-D
(Vote for not more than 1)
 Tonya Banks
 Elizabeth Blackburn
 Alesia Smith

For Member of County Central Committee CINCINNATI 3-E
(Vote for not more than 1)
 Shawnise Lewis
 Melanie Rhea Moon

For Member of County Central Committee CINCINNATI 4-A
(Vote for not more than 1)
 Barbara K. Myers

For Member of County Central Committee CINCINNATI 4-B
(Vote for not more than 1)
 Bryan S. Corder
 Renee Hevia

For Member of County Central Committee CINCINNATI 4-C
(Vote for not more than 1)
 Ben Lindy

For Member of County Central Committee CINCINNATI 4-D
(Vote for not more than 1)
 Evan Nolan

For Member of County Central Committee CINCINNATI 4-E
(Vote for not more than 1)

Write-in

For Member of County Central Committee CINCINNATI 4-F
(Vote for not more than 1)
 Jane E. Simon

For Member of County Central Committee CINCINNATI 4-G
(Vote for not more than 1)
 Joshua Schiller

For Member of County Central Committee CINCINNATI 4-H
(Vote for not more than 1)
 Craig M. Rozen
 Jenna Shaifer

For Member of County Central Committee CINCINNATI 5-A
(Vote for not more than 1)
 Phil Chick
 Jens G. Rosenkrantz, Jr.

For Member of County Central Committee CINCINNATI 5-B
(Vote for not more than 1)
 Lindsey Ferreira
 Sydney Yee

For Member of County Central Committee CINCINNATI 5-C
(Vote for not more than 1)
 Peter Kobak
 Stephanie Oliver-Mundy

For Member of County Central Committee CINCINNATI 5-D
(Vote for not more than 1)
 Karen McLaughlin
 Matt Widanski

For Member of County Central Committee CINCINNATI 5-E
(Vote for not more than 1)
 M. Alex Bauman

For Member of County Central Committee CINCINNATI 5-F
(Vote for not more than 1)
 Gavi Begtrup

For Member of County Central Committee CINCINNATI 5-G
(Vote for not more than 1)
 Bailey R. Drexler
 Ralph P. Ginocchio

For Member of County Central Committee CINCINNATI 5-H
(Vote for not more than 1)
 Ashley Bryant Bailey
 Mark P. Niehaus
 Katharine Marie Snyder
 Nick Wright

For Member of County Central Committee CINCINNATI 5-I
(Vote for not more than 1)
 Jackie Smith

For Member of County Central Committee CINCINNATI 6-A
(Vote for not more than 1)
 Ethan Grzeda
 Christopher Harding

For Member of County Central Committee CINCINNATI 6-B
(Vote for not more than 1)
 Seth Walsh
 James P. Wermes III

For Member of County Central Committee CINCINNATI 6-C
(Vote for not more than 1)
 Bailey Mulhern
 Patrick Reagan

For Member of County Central Committee CINCINNATI 6-D
(Vote for not more than 1)
 Chase James Mosijowsky
 Michael Ray Winland II

For Member of County Central Committee CINCINNATI 6-E
(Vote for not more than 1)
 Jasmine M. Coaston
 Misty Schauer

For Member of County Central Committee CINCINNATI 7-A
(Vote for not more than 1)
 Nichelle M. Bolden

For Member of County Central Committee CINCINNATI 7-C
(Vote for not more than 1)
 Elizabeth Henderson

For Member of County Central Committee CINCINNATI 7-D
(Vote for not more than 1)
 Laketa Cole
 Angela Aida Landa

For Member of County Central Committee CINCINNATI 7-E
(Vote for not more than 1)
 Joyce Frazier-Powdrill
 Latora Jackson

For Member of County Central Committee CINCINNATI 7-F
(Vote for not more than 1)
 Jacqueline R. Edmerson
 Charles Holmes

For Member of County Central Committee CINCINNATI 7-G
(Vote for not more than 1)
 Senovia Byndon
 Devoe Sherman

For Member of County Central Committee CINCINNATI 7-H
(Vote for not more than 1)
 Alicia Reece

For Member of County Central Committee CINCINNATI 7-I
(Vote for not more than 1)
 Dawn Merritt
 Andra Paitz
 Rochelle Thompson

For Member of County Central Committee CINCINNATI 7-J
(Vote for not more than 1)
 Carman Thomas

Read Both Sides of the Ballot

For Member of County Central Committee CINCINNATI 8-A
(Vote for not more than 1)

Nathan Halm

C. Freeman McNeal

For Member of County Central Committee CINCINNATI 8-B
(Vote for not more than 1)

Michael E. Cabral

Leila A. Case

Patricia Garry

For Member of County Central Committee CINCINNATI 8-C
(Vote for not more than 1)

Glenda Bernstein

For Member of County Central Committee CINCINNATI 8-D
(Vote for not more than 1)

Kristin Conatti

Deaontay Morris

For Member of County Central Committee CINCINNATI 9-B
(Vote for not more than 1)

Atticus Hoover

For Member of County Central Committee CINCINNATI 9-C
(Vote for not more than 1)

Marcia A. Futel

Demetrius A. Gregg

Bertin Ondja'a

Earmon Powell

For Member of County Central Committee CINCINNATI 9-D
(Vote for not more than 1)

Anthony DiMenna

For Member of County Central Committee CINCINNATI 10-A
(Vote for not more than 1)

Eddie Davenport

Catherine D. Ingram

For Member of County Central Committee CINCINNATI 10-B
(Vote for not more than 1)

Samuel C. Foulkes

Stephan Pryor

For Member of County Central Committee CINCINNATI 10-C
(Vote for not more than 1)

Ryan Lammi

Declan Tom

For Member of County Central Committee CINCINNATI 11-A
(Vote for not more than 1)

Rodney Bowden

Denise Driehaus

For Member of County Central Committee CINCINNATI 11-B
(Vote for not more than 1)

Paula Heflin

David William Klasovsky

Jack Martin

For Member of County Central Committee CINCINNATI 11-C
(Vote for not more than 1)

Kean T.R. Babcock

For Member of County Central Committee CINCINNATI 11-D
(Vote for not more than 1)

Patrick Clifford

For Member of County Central Committee CINCINNATI 12-A
(Vote for not more than 1)

Jack Graffagnino

For Member of County Central Committee CINCINNATI 12-C
(Vote for not more than 1)

Richard Bird

Grace Jarchow

Vada Stephens II

For Member of County Central Committee CINCINNATI 12-E
(Vote for not more than 1)

Todd Kevin Ingram

For Member of County Central Committee CINCINNATI 13-A
(Vote for not more than 1)

Write-in

For Member of County Central Committee CINCINNATI 13-B
(Vote for not more than 1)

Eric Kearney

For Member of County Central Committee CINCINNATI 13-C
(Vote for not more than 1)

Quentin J. Taylor

For Member of County Central Committee CINCINNATI 13-D
(Vote for not more than 1)
 Crystal L. Wright

For Member of County Central Committee CINCINNATI 13-E
(Vote for not more than 1)
 Tyra Oldham

For Member of County Central Committee CINCINNATI 13-F
(Vote for not more than 1)
 Shawn Baker
 Dawn Flanigan Johnson
 Meeka Owens

For Member of County Central Committee CINCINNATI 13-G
(Vote for not more than 1)
 Kareem Moffett

For Member of County Central Committee CINCINNATI 13-H
(Vote for not more than 1)
 Gavin J. Steele

For Member of County Central Committee CINCINNATI 14-A
(Vote for not more than 1)
 Karl A. Rinzel
 Grace Mae Wynn

For Member of County Central Committee CINCINNATI 14-B
(Vote for not more than 1)
 Patricia A. Mathis

For Member of County Central Committee CINCINNATI 14-C
(Vote for not more than 1)
 Jeff Lazar

For Member of County Central Committee CINCINNATI 14-D
(Vote for not more than 1)
 Michael J. Burke
 Michele R. Fisher
 Carleen Healy

For Member of County Central Committee CINCINNATI 14-E
(Vote for not more than 1)
 Anne Schuster

For Member of County Central Committee CINCINNATI 14-F
(Vote for not more than 1)

Write-in

For Member of County Central Committee CINCINNATI 14-G
(Vote for not more than 1)
 John R. McDaniel

For Member of County Central Committee CINCINNATI 14-H
(Vote for not more than 1)
 Christy S. Pember

For Member of County Central Committee CINCINNATI 14-I
(Vote for not more than 1)
 Sidney Siebert

Write-in

For Member of County Central Committee CINCINNATI 15-A
(Vote for not more than 1)
 Reggie Harris
 Erich Streckfuss

For Member of County Central Committee CINCINNATI 15-B
(Vote for not more than 1)
 Nikita Nicole Anderson
 Brian Garry
 Adam E. Hyland
 Abby Moran

For Member of County Central Committee CINCINNATI 15-C
(Vote for not more than 1)
 Ozie Davis III

For Member of County Central Committee CINCINNATI 15-D
(Vote for not more than 1)
 Raffel Prophett
 Jason D. Weaver

For Member of County Central Committee CINCINNATI 15-E
(Vote for not more than 1)
 Meghan D. Klein
 Evan Walker

For Member of County Central Committee CINCINNATI 15-F
(Vote for not more than 1)
 Preston A. Polen
 Ian Sloan
 Lauren B. Worley

Read Both Sides of the Ballot

For Member of County Central Committee CINCINNATI 15-G
(Vote for not more than 1)
 Wyatt King

For Member of County Central Committee CINCINNATI 15-H
(Vote for not more than 1)
 Mark Jeffreys

For Member of County Central Committee CINCINNATI 15-I
(Vote for not more than 1)
 Alexis Fraser Cain
 Benjamin K. Schneider

For Member of County Central Committee CINCINNATI 15-J
(Vote for not more than 1)
 Irvetta M. McMurtry

For Member of County Central Committee CINCINNATI 16-A
(Vote for not more than 1)
 Alison C. Trianfo

For Member of County Central Committee CINCINNATI 17-A
(Vote for not more than 1)
 Christopher M. Griffin
 Monica Windholtz

For Member of County Central Committee CINCINNATI 17-B
(Vote for not more than 1)
 Helen Black
 Kaeleigh Farrish

For Member of County Central Committee CINCINNATI 17-C
(Vote for not more than 1)
 Jon J. Harmon
 Miranda Horsley

For Member of County Central Committee CINCINNATI 18-A
(Vote for not more than 1)
 Ryan James
 Dale Mallory

For Member of County Central Committee CINCINNATI 19-B
(Vote for not more than 1)
 Michelle Dunn
 John E. Turco

For Member of County Central Committee CINCINNATI 20-A
(Vote for not more than 1)
 Irene Burton
 Earl Hickson

For Member of County Central Committee CINCINNATI 20-B
(Vote for not more than 1)
 Amber Kassem

For Member of County Central Committee CINCINNATI 20-C
(Vote for not more than 1)
 John M. Armstrong
 Paula V. Houston-Allen
 Russell Poland

For Member of County Central Committee CINCINNATI 20-D
(Vote for not more than 1)
 Bob Bammann

For Member of County Central Committee CINCINNATI 20-E
(Vote for not more than 1)
 Bennett P. Allen

For Member of County Central Committee CINCINNATI 21-A
(Vote for not more than 1)
 Sharonda A. Hunter

For Member of County Central Committee CINCINNATI 21-B
(Vote for not more than 1)
 Fannie Carradine
 James D. Casey
 Ollie Goins

For Member of County Central Committee CINCINNATI 21-C
(Vote for not more than 1)
 Jennifer Valdez

For Member of County Central Committee CINCINNATI 21-D
(Vote for not more than 1)
 Damon Lynch IV

For Member of County Central Committee CINCINNATI 21-E
(Vote for not more than 1)
 Darlene Capell
 John M. Holcomb
 James Henry Williams

For Member of County Central Committee CINCINNATI 22-A
(Vote for not more than 1)
 Laura R. Sullivan

For Member of County Central Committee CINCINNATI 22-B
(Vote for not more than 1)
 Donald Washington

For Member of County Central Committee CINCINNATI 23-A
(Vote for not more than 1)

Write-in

For Member of County Central Committee CINCINNATI 23-B
(Vote for not more than 1)
 Cathie Kuhl

For Member of County Central Committee CINCINNATI 23-C
(Vote for not more than 1)
 Lucy Crane
 Peter K. Sloan

For Member of County Central Committee CINCINNATI 23-D
(Vote for not more than 1)
 Elizabeth Ann Shank

For Member of County Central Committee CINCINNATI 23-E
(Vote for not more than 1)
 Marvel Glover

For Member of County Central Committee CINCINNATI 23-F
(Vote for not more than 1)
 Buz A. Davis
 Mary A. Maune

For Member of County Central Committee CINCINNATI 23-G
(Vote for not more than 1)
 Mary Lieneck

For Member of County Central Committee CINCINNATI 23-H
(Vote for not more than 1)
 Harriet Russell

For Member of County Central Committee CINCINNATI 23-I
(Vote for not more than 1)
 Ann E. Abbott
 Michael Cappel

For Member of County Central Committee CINCINNATI 23-J
(Vote for not more than 1)
 Yasmine Allen
 Christie Kuhns

For Member of County Central Committee CINCINNATI 23-K
(Vote for not more than 1)
 Eve Bolton
 Matt McGuire
 Charles T. Thompson
 Sil Watkins

For Member of County Central Committee CINCINNATI 23-L
(Vote for not more than 1)
 Greg Fritz

For Member of County Central Committee CINCINNATI 23-M
(Vote for not more than 1)
 Laretta Omeltschenko

For Member of County Central Committee CINCINNATI 23-N
(Vote for not more than 1)
 Gerald L. Bonecutter
 Regina L. Foley

For Member of County Central Committee CINCINNATI 23-O
(Vote for not more than 1)
 Sherrill Ingram

For Member of County Central Committee CINCINNATI 23-P
(Vote for not more than 1)

Write-in

For Member of County Central Committee CINCINNATI 23-Q
(Vote for not more than 1)
 Tony Potochnik

For Member of County Central Committee CINCINNATI 23-R
(Vote for not more than 1)
 Jacqueline Amos

For Member of County Central Committee CINCINNATI 24-A
(Vote for not more than 1)
 Aaron Madrigal
 LaRonda Thomas

For Member of County Central Committee CINCINNATI 24-B
(Vote for not more than 1)
 Gary Robbins

For Member of County Central Committee CINCINNATI 24-C
(Vote for not more than 1)
 Mary Clare Rietz

Read Both Sides of the Ballot

For Member of County Central Committee CINCINNATI 24-D
(Vote for not more than 1)

Rennette Rollinson

Joseph Schaljo

Ronald Williams

For Member of County Central Committee CINCINNATI 24-E
(Vote for not more than 1)

Seana George

For Member of County Central Committee CINCINNATI 24-F
(Vote for not more than 1)

Will A. Davis, Jr.

Dale A. Gresham, Jr.

For Member of County Central Committee CINCINNATI 24-G
(Vote for not more than 1)

Kamyia A. Henderson

For Member of County Central Committee CINCINNATI 24-I
(Vote for not more than 1)

Brieane S. Smith

For Member of County Central Committee CINCINNATI 25-A
(Vote for not more than 1)

Michael T. Shockley

For Member of County Central Committee CINCINNATI 25-C
(Vote for not more than 1)

Clayton W. Adams

Coleman Kane

Sherry Moore

For Member of County Central Committee CINCINNATI 25-D
(Vote for not more than 1)

Ben Klayer

For Member of County Central Committee CINCINNATI 25-E
(Vote for not more than 1)

Mark A. Childers

For Member of County Central Committee CINCINNATI 25-F
(Vote for not more than 1)

Pat Bruns

For Member of County Central Committee CINCINNATI 25-G
(Vote for not more than 1)

Jeff M. Cramerding

Lewis Pittman

For Member of County Central Committee CINCINNATI 25-H
(Vote for not more than 1)

Theresa Maria Allen

Robin Y. Valdez

For Member of County Central Committee CINCINNATI 25-I
(Vote for not more than 1)

Marisa Banes

Billie Bonniwell

Don Driehaus

For Member of County Central Committee CINCINNATI 25-J
(Vote for not more than 1)

Chandra Marie Gardner

Ryan A. Pope

For Member of County Central Committee CINCINNATI 26-A
(Vote for not more than 1)

Emmalee D. Smith

For Member of County Central Committee CINCINNATI 26-B
(Vote for not more than 1)

David H. Booker

Erin Duffy

For Member of County Central Committee CINCINNATI 26-C
(Vote for not more than 1)

Sarah Carpenter

For Member of County Central Committee CINCINNATI 26-D
(Vote for not more than 1)

Write-in

For Member of County Central Committee CINCINNATI 26-E
(Vote for not more than 1)

Kerry Rundle McIver

LaTonya Springs

For Member of County Central Committee CINCINNATI 26-F
(Vote for not more than 1)

Sefanit T. Berhane

Rodger D. Horton

For Member of County Central Committee CINCINNATI 26-H
(Vote for not more than 1)

Write-in

For Member of County Central Committee CINCINNATI 26-J
(Vote for not more than 1)
 Janice Lee Ludewig

For Member of County Central Committee CINCINNATI 26-K
(Vote for not more than 1)

Write-in

For Member of County Central Committee CINCINNATI 26-L
(Vote for not more than 1)
 RicJunette Addie
 Anne K. Allen
 Chantal Hill

For Member of County Central Committee CINCINNATI 26-M
(Vote for not more than 1)
 Justin S. Morrett

For Member of County Central Committee CINCINNATI 26-N
(Vote for not more than 1)
 Sol A. Kersey
 Joseph M. Pettinato
 Donika Washington

For Member of County Central Committee CINCINNATI 26-O
(Vote for not more than 1)
 Alexandra Pollard
 Victoria Straughn

For Member of County Central Committee CINCINNATI 26-P
(Vote for not more than 1)
 NeFree Cook
 Carmen D. Myers

For Member of County Central Committee CINCINNATI 26-Q
(Vote for not more than 1)
 Branden L. Holley

For Member of County Central Committee CINCINNATI 26-R
(Vote for not more than 1)
 Ashley C. Feist
 Gilbert Williams

For Member of County Central Committee CINCINNATI 26-S
(Vote for not more than 1)
 Dorothea Jeana Sparks

For Member of County Central Committee BLUE ASH 1-A
(Vote for not more than 1)
 Rhonda Beth Schechter

For Member of County Central Committee BLUE ASH 2-B
(Vote for not more than 1)
 Maxine Kopel
Bookbinder

For Member of County Central Committee BLUE ASH 2-C
(Vote for not more than 1)
 Charlene Schneider

For Member of County Central Committee BLUE ASH 3-A
(Vote for not more than 1)
 Ann Neuer

For Member of County Central Committee BLUE ASH 3-B
(Vote for not more than 1)
 Debra Loeb

For Member of County Central Committee BLUE ASH 4-A
(Vote for not more than 1)
 Sandy McClure

For Member of County Central Committee BLUE ASH 4-B
(Vote for not more than 1)
 Robin Hartmann

For Member of County Central Committee BLUE ASH 5-A
(Vote for not more than 1)
 Soren Harward

For Member of County Central Committee CHEVIOT 1-A
(Vote for not more than 1)
 Kimberlee Erdman
Rohr

For Member of County Central Committee CHEVIOT 2-A
(Vote for not more than 1)
 Troy Dean Borgmann

For Member of County Central Committee CHEVIOT 3-A
(Vote for not more than 1)
 Stefanie A. Hawk

For Member of County Central Committee CHEVIOT 4-A
(Vote for not more than 1)
 Samuel D. Keller

For Member of County Central Committee DEER PARK 1-A
(Vote for not more than 1)
 Dana Dedrick

Read Both Sides of the Ballot

For Member of County Central Committee DEER PARK 2-A
(Vote for not more than 1)
 Mary Kleemeier
 Jo Ann Woodcock

For Member of County Central Committee DEER PARK 3-A
(Vote for not more than 1)
 Emily Culver

For Member of County Central Committee DEER PARK 4-A
(Vote for not more than 1)
 Jacklyn Campbell Brumley

For Member of County Central Committee FOREST PARK A
(Vote for not more than 1)
 George Cummings

For Member of County Central Committee FOREST PARK B
(Vote for not more than 1)
 Angela L. Steagall

For Member of County Central Committee FOREST PARK C
(Vote for not more than 1)
 Charles Johnson

For Member of County Central Committee FOREST PARK E
(Vote for not more than 1)
 Chelsea Clark

For Member of County Central Committee FOREST PARK G
(Vote for not more than 1)
 Reginald Sylvester

For Member of County Central Committee FOREST PARK I
(Vote for not more than 1)
 Deborah Jackson

For Member of County Central Committee FOREST PARK J
(Vote for not more than 1)
 Tracy Dillingham
 Terence A. Harrison
 Robin Wright-Pierce

For Member of County Central Committee FOREST PARK L
(Vote for not more than 1)
 Matthew Bernardo
 Stephanie R. Knott
 Kyle McCreery

For Member of County Central Committee FOREST PARK M
(Vote for not more than 1)
 Denise Holt

For Member of County Central Committee HARRISON C
(Vote for not more than 1)

Write-in

For Member of County Central Committee HARRISON D
(Vote for not more than 1)
 Tammy Simendinger

For Member of County Central Committee INDIAN HILL A
(Vote for not more than 1)
 Meghan M. Stevens

For Member of County Central Committee INDIAN HILL B
(Vote for not more than 1)
 Marilyn J.S. Hyland

For Member of County Central Committee INDIAN HILL C
(Vote for not more than 1)
 Rhoda A. Brooks

For Member of County Central Committee INDIAN HILL D
(Vote for not more than 1)
 Nathan G. Alley

For Member of County Central Committee INDIAN HILL E
(Vote for not more than 1)
 Michele L. Young

For Member of County Central Committee INDIAN HILL F
(Vote for not more than 1)
 G. Christine Weber

For Member of County Central Committee LOVELAND B
(Vote for not more than 1)
 Sara Jarvis

For Member of County Central Committee LOVELAND D
(Vote for not more than 1)
 Enitan Olojo
 Terrie Puckett
 Sara Walden

For Member of County Central Committee LOVELAND E
(Vote for not more than 1)
 Peter Simon

For Member of County Central Committee LOVELAND F
(Vote for not more than 1)
 Jane L. Gonzales

For Member of County Central Committee LOVELAND G
(Vote for not more than 1)
 Cynthia Daumeyer

For Member of County Central Committee MADEIRA A
(Vote for not more than 1)
 Kirk Gray

For Member of County Central Committee MADEIRA B
(Vote for not more than 1)
 Neal W. Dunsieith, Jr.

For Member of County Central Committee MADEIRA C
(Vote for not more than 1)
 Brian Mueller

For Member of County Central Committee MADEIRA D
(Vote for not more than 1)
 Jim Ryan

For Member of County Central Committee MADEIRA F
(Vote for not more than 1)
 Steven R. Daggitt

For Member of County Central Committee MADEIRA G
(Vote for not more than 1)
 Denise M. McClenathan

For Member of County Central Committee MADEIRA H
(Vote for not more than 1)
 Sara Burhan Abdullah
 Vivek H. Ashok
 Andy Spooner

For Member of County Central Committee MONTGOMERY A
(Vote for not more than 1)
 Susie Lewis

For Member of County Central Committee MONTGOMERY B
(Vote for not more than 1)
 Rodel Edjan

For Member of County Central Committee MONTGOMERY C
(Vote for not more than 1)
 Jeffrey Bassin

For Member of County Central Committee MONTGOMERY E
(Vote for not more than 1)
 Roger L. Pomplas

For Member of County Central Committee MONTGOMERY G
(Vote for not more than 1)
 Ellen Owens

For Member of County Central Committee MONTGOMERY H
(Vote for not more than 1)
 Kathy Fromell

For Member of County Central Committee MONTGOMERY I
(Vote for not more than 1)
 Charles E. Hawks

For Member of County Central Committee MT HEALTHY 1-A
(Vote for not more than 1)
 Pamela Stewart
 James Wolf

For Member of County Central Committee MT HEALTHY 2-A
(Vote for not more than 1)

Write-in

For Member of County Central Committee MT HEALTHY 3-A
(Vote for not more than 1)
 Kurt E. Kube

For Member of County Central Committee MT HEALTHY 4-A
(Vote for not more than 1)
 Donald J. Miles

For Member of County Central Committee NO COLL HILL 1-A
(Vote for not more than 1)
 Michael R. Sisco
 Joel Vanderkolk
 Nick Wietlisbach

For Member of County Central Committee NO COLL HILL 3-A
(Vote for not more than 1)
 Kengore Jackson
 Walter Williams

Read Both Sides of the Ballot

For Member of County Central Committee NO COLL HILL 4-A

(Vote for not more than 1)

- Maddison Benecke
- Trevon Gaston
- Sarah Madrigal
- Kee'Vona Starr Walker
- Victor D. Wilson

For Member of County Central Committee NO COLL HILL 4-B

(Vote for not more than 1)

Write-in

For Member of County Central Committee NO COLL HILL 4-C

(Vote for not more than 1)

- LaTonya Chichester
- Stephanie R. Jones
- Alisa Smith
- Arica Underwood

For Member of County Central Committee NORWOOD 1-A

(Vote for not more than 1)

- Keith D. Moore

For Member of County Central Committee NORWOOD 1-B

(Vote for not more than 1)

- Joseph C. Geers
- Kelsi R. Goins

For Member of County Central Committee NORWOOD 1-C

(Vote for not more than 1)

- Sean M. Daugherty
- Andrew Adams Guthrie

For Member of County Central Committee NORWOOD 2-A

(Vote for not more than 1)

- Taylor Adele Provins

For Member of County Central Committee NORWOOD 2-B

(Vote for not more than 1)

- James Bonsall
- Debra Hackett

For Member of County Central Committee NORWOOD 3-A

(Vote for not more than 1)

- Shannon Miranda
- Zophia Pittman

For Member of County Central Committee NORWOOD 3-B

(Vote for not more than 1)

- Nicholas Rericha

For Member of County Central Committee NORWOOD 3-C

(Vote for not more than 1)

- Ermil David Johnson, Sr.

For Member of County Central Committee NORWOOD 4-A

(Vote for not more than 1)

- Joseph F. Muthig

For Member of County Central Committee NORWOOD 4-B

(Vote for not more than 1)

- Danielle C. Sullivan
- Candace L. Tubbs

For Member of County Central Committee NORWOOD 4-C

(Vote for not more than 1)

- Paul Mason

For Member of County Central Committee READING 2-A

(Vote for not more than 1)

- Timothy L. Hoerst

For Member of County Central Committee READING 2-B

(Vote for not more than 1)

- Adelaide Kruse

For Member of County Central Committee READING 3-B

(Vote for not more than 1)

- Sandra Finch Blunt

For Member of County Central Committee SHARONVILLE 1-B

(Vote for not more than 1)

Write-in

For Member of County Central Committee SHARONVILLE 2-A

(Vote for not more than 1)

- Charles L. King, Jr.

For Member of County Central Committee SHARONVILLE 4-A

(Vote for not more than 1)

- John D. Behnen

For Member of County Central Committee SHARONVILLE 4-B

(Vote for not more than 1)

- Anthony Martin

For Member of County Central Committee SPRINGDALE A
(Vote for not more than 1)
 Chris Macklin

For Member of County Central Committee SPRINGDALE C
(Vote for not more than 1)
 Riei Jennifer Hiratsuka

For Member of County Central Committee SPRINGDALE G
(Vote for not more than 1)
 David E. Gleaves

For Member of County Central Committee WYOMING A
(Vote for not more than 1)
 Timothy P. O'Neill

For Member of County Central Committee WYOMING B
(Vote for not more than 1)
 Kenneth Shewmon

For Member of County Central Committee WYOMING C
(Vote for not more than 1)
 Carole Dillon

For Member of County Central Committee WYOMING D
(Vote for not more than 1)
 Deborah M. Allsop
 Paulette E. Moore

For Member of County Central Committee WYOMING E
(Vote for not more than 1)
 Rebecca Miars

For Member of County Central Committee AMBERLEY A
(Vote for not more than 1)
 David H. Mabo

For Member of County Central Committee AMBERLEY B
(Vote for not more than 1)

Write-in

For Member of County Central Committee AMBERLEY C
(Vote for not more than 1)
 Monica D. Lira

For Member of County Central Committee AMBERLEY D
(Vote for not more than 1)
 Hannah Hutchinson

Write-in

For Member of County Central Committee ANDERSON A
(Vote for not more than 1)
 Jackson L. Hatfield
 Jim Whittaker

For Member of County Central Committee ANDERSON B
(Vote for not more than 1)
 Nancy Brewer

For Member of County Central Committee ANDERSON C
(Vote for not more than 1)
 Kate Hand

For Member of County Central Committee ANDERSON D
(Vote for not more than 1)
 Debi Wilson

For Member of County Central Committee ANDERSON E
(Vote for not more than 1)
 Pavan V. Parikh

For Member of County Central Committee ANDERSON F
(Vote for not more than 1)
 Pamela Ford

For Member of County Central Committee ANDERSON G
(Vote for not more than 1)
 Barbara York

For Member of County Central Committee ANDERSON H
(Vote for not more than 1)
 Mark Evans
 Katie Nappi

For Member of County Central Committee ANDERSON I
(Vote for not more than 1)
 Lisa Staton

For Member of County Central Committee ANDERSON J
(Vote for not more than 1)
 Bonnie Dunkelman

For Member of County Central Committee ANDERSON K
(Vote for not more than 1)
 Steve Phelan

For Member of County Central Committee ANDERSON L
(Vote for not more than 1)
 Sean Martin
 Nicholas A. Tekulve

Read Both Sides of the Ballot

For Member of County Central Committee ANDERSON M
(Vote for not more than 1)
 David Howard

For Member of County Central Committee ANDERSON N
(Vote for not more than 1)
 Kaitlyn M. Japikse
 Jon Latham-Peter

For Member of County Central Committee ANDERSON O
(Vote for not more than 1)
 Paul McKibben

For Member of County Central Committee ANDERSON P
(Vote for not more than 1)
 Abby M. Adams

For Member of County Central Committee ANDERSON Q
(Vote for not more than 1)
 Stephen R. Ploetz

For Member of County Central Committee ANDERSON R
(Vote for not more than 1)
 Kristen M. Kalonick

For Member of County Central Committee ANDERSON S
(Vote for not more than 1)
 Kathy Brusman
 Lindy Ellen DeMaria

For Member of County Central Committee ANDERSON T
(Vote for not more than 1)
 Rachel B. Baker

For Member of County Central Committee ANDERSON U
(Vote for not more than 1)
 Jessica Cunningham

For Member of County Central Committee ANDERSON V
(Vote for not more than 1)
 Martha L. Viehmann

For Member of County Central Committee ANDERSON W
(Vote for not more than 1)
 Barbara J. Arend-Hendricks

For Member of County Central Committee ANDERSON X
(Vote for not more than 1)
 Tami King

For Member of County Central Committee ANDERSON Y
(Vote for not more than 1)
 Janet M. Smith

For Member of County Central Committee ANDERSON Z
(Vote for not more than 1)
 Benjamin Barden
 Sarah Pritts

For Member of County Central Committee ANDERSON AA
(Vote for not more than 1)
 Natalie Wheeler Hastings

For Member of County Central Committee ANDERSON BB
(Vote for not more than 1)
 Michelle Walton

For Member of County Central Committee ANDERSON CC
(Vote for not more than 1)
 David C. Warner

For Member of County Central Committee ANDERSON DD
(Vote for not more than 1)
 Rebecca Brewer
 Claire Kilbourne

For Member of County Central Committee ANDERSON EE
(Vote for not more than 1)
 Tara K. Burke

For Member of County Central Committee ANDERSON FF
(Vote for not more than 1)
 Polly A. Harrison
 Janis M. Longbottom

For Member of County Central Committee COLERAIN C
(Vote for not more than 1)
 Robin Walker
 Virginia Wiggins

For Member of County Central Committee COLERAIN D
(Vote for not more than 1)
 Karen Y. McDaniel

For Member of County Central Committee COLERAIN F
(Vote for not more than 1)
 Diane C. Salvato

For Member of County Central Committee COLERAIN H
(Vote for not more than 1)
 Ronald C. Harris
 Angela C. Heinz
 Kerry Mattingly

For Member of County Central Committee COLERAIN M
(Vote for not more than 1)
 Bridgett Brogden

For Member of County Central Committee COLERAIN N
(Vote for not more than 1)
 Theresa Harper Kolodzik

For Member of County Central Committee COLERAIN O
(Vote for not more than 1)
 Burnetta M. Solomon

For Member of County Central Committee COLERAIN P
(Vote for not more than 1)
 Tiwana Henderson

For Member of County Central Committee COLERAIN Q
(Vote for not more than 1)
 Jonathan R. Bradner

For Member of County Central Committee COLERAIN S
(Vote for not more than 1)
 Cendi R. Kegley

For Member of County Central Committee COLERAIN DD
(Vote for not more than 1)
 Marie W. Smith

For Member of County Central Committee COLERAIN KK
(Vote for not more than 1)

Write-in

For Member of County Central Committee COLERAIN LL
(Vote for not more than 1)
 Janecia King

For Member of County Central Committee COLUMBIA C
(Vote for not more than 1)
 Rebecca S. Brown

For Member of County Central Committee COLUMBIA D
(Vote for not more than 1)
 David Lewis

For Member of County Central Committee COLUMBIA E
(Vote for not more than 1)
 Bridalveil Powell

Write-in

For Member of County Central Committee COLUMBIA F
(Vote for not more than 1)
 Sue E. Hall
 Michael F. Tighe

For Member of County Central Committee COLUMBIA G
(Vote for not more than 1)
 Jack Fuchs

For Member of County Central Committee DELHI A
(Vote for not more than 1)
 Anthony J.M. Hollis

For Member of County Central Committee DELHI C
(Vote for not more than 1)

Write-in

For Member of County Central Committee DELHI D
(Vote for not more than 1)
 Daniel A. Guidos

For Member of County Central Committee DELHI J
(Vote for not more than 1)
 Jo Ann Guido

For Member of County Central Committee DELHI K
(Vote for not more than 1)
 Dawn Deffenbaugh

For Member of County Central Committee DELHI M
(Vote for not more than 1)
 Kimberly Dee Knecht
 Sara E. White

For Member of County Central Committee DELHI O
(Vote for not more than 1)
 Kimberly Shay

For Member of County Central Committee DELHI P
(Vote for not more than 1)
 Sharon Coolidge

For Member of County Central Committee DELHI Q
(Vote for not more than 1)
 Allison H. Smith

For Member of County Central Committee ELMWOOD A
(Vote for not more than 1)
 Regina Richardson

Read Both Sides of the Ballot

For Member of County Central Committee EVENDALE A
(Vote for not more than 1)
 Jerry R. Baker

For Member of County Central Committee EVENDALE B
(Vote for not more than 1)
 Carolyn Smiley-Robertson

For Member of County Central Committee EVENDALE C
(Vote for not more than 1)
 Julien Teitelbaum

For Member of County Central Committee FAIRFAX A
(Vote for not more than 1)
 Catherine J. Daggitt
 Jenny Fowler

For Member of County Central Committee GLENDALE A
(Vote for not more than 1)

Write-in

For Member of County Central Committee GLENDALE B
(Vote for not more than 1)
 Mary Mulvoy Lofty

For Member of County Central Committee GOLF MANOR B
(Vote for not more than 1)

Write-in

For Member of County Central Committee GREEN A
(Vote for not more than 1)

Write-in

For Member of County Central Committee GREEN B
(Vote for not more than 1)
 Chris Collins

For Member of County Central Committee GREEN C
(Vote for not more than 1)
 Jeanine Jason

For Member of County Central Committee GREEN E
(Vote for not more than 1)
 Janice Hunter

For Member of County Central Committee GREEN H
(Vote for not more than 1)
 Michael Krueger

For Member of County Central Committee GREEN J
(Vote for not more than 1)
 Sandra Bennett-Poettker

For Member of County Central Committee GREEN K
(Vote for not more than 1)
 Catherine M. Allaben

For Member of County Central Committee GREEN P
(Vote for not more than 1)
 Christine Zevon

For Member of County Central Committee GREEN Q
(Vote for not more than 1)
 Jameson William King

For Member of County Central Committee GREEN T
(Vote for not more than 1)
 Robert Voellmecke

For Member of County Central Committee GREEN V
(Vote for not more than 1)
 Ronald Dean McCamey

For Member of County Central Committee GREEN W
(Vote for not more than 1)
 Andrew Geraghty

For Member of County Central Committee GREEN Y
(Vote for not more than 1)
 Scott Crowley

For Member of County Central Committee GREEN Z
(Vote for not more than 1)
 Barbara Piatt
 Ethan Portune

For Member of County Central Committee GREEN AA
(Vote for not more than 1)
 Mary Mark

For Member of County Central Committee GREEN EE
(Vote for not more than 1)
 Noah A. Breeze

For Member of County Central Committee GREEN HH
(Vote for not more than 1)
 Cindy Manning

For Member of County Central Committee GREEN II
(Vote for not more than 1)
 Rupa Townsend

For Member of County Central Committee GREEN JJ
(Vote for not more than 1)
 Noah Starrett

For Member of County Central Committee GREEN KK
(Vote for not more than 1)
 Ronald Lee Krisher

For Member of County Central Committee GREEN LL
(Vote for not more than 1)
 Adam Denney

For Member of County Central Committee GREEN PP
(Vote for not more than 1)
 Jean A. Siebenaler

For Member of County Central Committee GREENHILLS A
(Vote for not more than 1)
 Alecia Walter

For Member of County Central Committee GREENHILLS B
(Vote for not more than 1)
 Donald E. Garrett, Jr.
 Karen S. Williams-McCollum

For Member of County Central Committee GREENHILLS C
(Vote for not more than 1)
 Pat Andwan

For Member of County Central Committee HARR TWP AA
(Vote for not more than 1)
 Nicole F. Gill

For Member of County Central Committee LINCOLN HGTS A
(Vote for not more than 1)

Write-in

For Member of County Central Committee LINCOLN HGTS B
(Vote for not more than 1)
 Trina A. Carter

For Member of County Central Committee MARIEMONT A
(Vote for not more than 1)
 Adam Wilkey
 Tricia A. Williams

For Member of County Central Committee MARIEMONT B
(Vote for not more than 1)
 Jennifer Ebelhar
 Amy Wagar

For Member of County Central Committee ADDYSTON A
(Vote for not more than 1)

Write-in

For Member of County Central Committee MIAMI TWP A
(Vote for not more than 1)
 Mark Meckstroth

For Member of County Central Committee MIAMI TWP G
(Vote for not more than 1)
 Mitchell Hare

For Member of County Central Committee NEWTOWN A
(Vote for not more than 1)
 Alexandria R. Alspaugh

For Member of County Central Committee NEWTOWN B
(Vote for not more than 1)
 Joan W. Welsh

For Member of County Central Committee ST BERNARD 2-A
(Vote for not more than 1)
 Elijah J. Hyman
 Cecil Thomas

For Member of County Central Committee ST BERNARD 3-A
(Vote for not more than 1)
 Gianna A. Moore

Write-in

For Member of County Central Committee ST BERNARD 4-A
(Vote for not more than 1)

Write-in

For Member of County Central Committee SILVERTON A
(Vote for not more than 1)
 Mary T. Schuster

For Member of County Central Committee SILVERTON B
(Vote for not more than 1)
 Britt Born
 Shirley A. Jason
 Dottie Williams

For Member of County Central Committee SILVERTON C
(Vote for not more than 1)
 Don Kincaid
 Brad Smith

For Member of County Central Committee SPRINGFIELD C
(Vote for not more than 1)
 Krystal Daniels

Read Both Sides of the Ballot

For Member of County Central Committee SPRINGFIELD D
(Vote for not more than 1)
 Milbeth Allen
 Ciera J. Jones

For Member of County Central Committee SPRINGFIELD E
(Vote for not more than 1)
 Ian Ferguson

For Member of County Central Committee SPRINGFIELD F
(Vote for not more than 1)
 Dorothy T. White

For Member of County Central Committee SPRINGFIELD G
(Vote for not more than 1)
 Linda McCoy Rogers
 Charla Stewart
 Coleman Alexander Williams

For Member of County Central Committee SPRINGFIELD H
(Vote for not more than 1)
 Alissa Riessinger

For Member of County Central Committee SPRINGFIELD I
(Vote for not more than 1)

Write-in

For Member of County Central Committee SPRINGFIELD J
(Vote for not more than 1)
 Wendolyn Irwin

For Member of County Central Committee SPRINGFIELD K
(Vote for not more than 1)
 Darlene Crumpton

For Member of County Central Committee SPRINGFIELD L
(Vote for not more than 1)

Write-in

For Member of County Central Committee SPRINGFIELD M
(Vote for not more than 1)
 Rachell M. Garrett

For Member of County Central Committee SPRINGFIELD N
(Vote for not more than 1)
 Jefferson J. King

Write-in

For Member of County Central Committee SPRINGFIELD O
(Vote for not more than 1)
 Michelle Thacker

For Member of County Central Committee SPRINGFIELD P
(Vote for not more than 1)
 Vernon West

For Member of County Central Committee SPRINGFIELD Q
(Vote for not more than 1)
 Gwen McFarlin

For Member of County Central Committee SPRINGFIELD R
(Vote for not more than 1)
 Sara M. Braun

For Member of County Central Committee SPRINGFIELD S
(Vote for not more than 1)
 Reynaldo Taylor

For Member of County Central Committee SPRINGFIELD T
(Vote for not more than 1)
 Mya P. Miller

For Member of County Central Committee SPRINGFIELD U
(Vote for not more than 1)
 Carlton R. Collins
 Jamie Rea

For Member of County Central Committee SPRINGFIELD V
(Vote for not more than 1)
 Michael R. Gibboney, Jr.

For Member of County Central Committee SPRINGFIELD W
(Vote for not more than 1)
 Shelly S. Sherman

For Member of County Central Committee SPRINGFIELD X
(Vote for not more than 1)
 Lila M. Logan

For Member of County Central Committee SPRINGFIELD Y
(Vote for not more than 1)
 Chad A. Thomas

For Member of County Central Committee SPRINGFIELD Z
(Vote for not more than 1)
 Amanda Lynn A. Anderson Reese

For Member of County Central Committee SPRINGFIELD BB
(Vote for not more than 1)
 Megan Mary Dougherty
 Sherri Richardson

For Member of County Central Committee SYCAMORE B
(Vote for not more than 1)
 Lois Borisch

For Member of County Central Committee SYCAMORE C
(Vote for not more than 1)
 Kelly Saylor

For Member of County Central Committee SYCAMORE J
(Vote for not more than 1)
 Ethan Nichols

For Member of County Central Committee SYMMES A
(Vote for not more than 1)
 D'arcy Eugene Havill

For Member of County Central Committee SYMMES B
(Vote for not more than 1)
 Laura B. Sprauer

For Member of County Central Committee SYMMES C
(Vote for not more than 1)
 Christian Davis
 Rebecca M. Moates

For Member of County Central Committee SYMMES D
(Vote for not more than 1)
 Karen Brownlee

For Member of County Central Committee SYMMES E
(Vote for not more than 1)
 Elizabeth N. Bruggeman

For Member of County Central Committee SYMMES F
(Vote for not more than 1)
 Katie Hofmann

For Member of County Central Committee SYMMES G
(Vote for not more than 1)
 Linda C. Miller

For Member of County Central Committee SYMMES H
(Vote for not more than 1)
 Paula Oakland

For Member of County Central Committee SYMMES I
(Vote for not more than 1)
 Mary Carol Melton

For Member of County Central Committee SYMMES J
(Vote for not more than 1)
 Josh Hendrickson

For Member of County Central Committee SYMMES K
(Vote for not more than 1)
 Christine Rasmussen

For Member of County Central Committee SYMMES L
(Vote for not more than 1)
 Sara Bitter

For Member of County Central Committee TERRACE PARK A
(Vote for not more than 1)
 Clare Williams

For Member of County Central Committee TERRACE PARK B
(Vote for not more than 1)

Write-in

For Member of County Central Committee WHITEWATER B
(Vote for not more than 1)
 Sara E. Bloomer

For Member of County Central Committee WOODLAWN A
(Vote for not more than 1)
 Gina Ruffin Moore

For Member of County Central Committee WOODLAWN B
(Vote for not more than 1)
 Jack Cunningham
 Cofi Higgins

1.) PROPOSED INCOME TAX MT. HEALTHY CITY SCHOOL DISTRICT
A majority affirmative vote is necessary for passage.

Shall an annual income tax of 0.75 percent on the earned income of individuals residing in the school district be imposed by Mt. Healthy City School District, for a continuing period of time, beginning January 1, 2027, for the purpose of current expenses?

FOR THE TAX
 AGAINST THE TAX

Read Both Sides of the Ballot

**2.) PROPOSED INCOME TAX
NORTH COLLEGE HILL CITY
SCHOOL DISTRICT**

A majority affirmative vote is necessary for passage.

Shall an annual income tax of 1.25 percent on the earned income of individuals residing in the school district be imposed by North College Hill City School District, for 5 years, beginning January 1, 2027, for the purpose of current expenses?

FOR THE TAX

AGAINST THE TAX

**3.) PROPOSED TAX LEVY
(ADDITIONAL)
SOUTHWEST LOCAL SCHOOL
DISTRICT**

A majority affirmative vote is necessary for passage.

An additional tax for the benefit of Southwest Local School District for the purpose of current expenses that the county auditor estimates will collect \$4,385,053 annually, at a rate not exceeding 4 mills for each \$1 of taxable value, which amounts to \$140 for each \$100,000 of the county auditor's appraised value, for 5 years, commencing in 2026, first due in calendar year 2027.

FOR THE TAX LEVY

**AGAINST THE TAX
LEVY**

**4.) PROPOSED BOND ISSUE
CITY OF READING**

A majority affirmative vote is necessary for passage.

Shall bonds be issued by the City of Reading for the purpose of site acquisition, new construction, improvements, renovations and additions to municipal facilities and providing equipment, furnishings and site improvements therefor, in the principal amount of \$27,000,000, to be repaid annually over a maximum period of 28 years, and an annual levy of property taxes be made outside the ten-mill limitation, estimated by the county auditor to average over the repayment period of the bond issue

5.89 mills for each \$1 of taxable value, which amounts to \$206 for each \$100,000 of the county auditor's market value, commencing in 2026, first due in calendar year 2027, to pay the annual debt charges on the bonds, and to pay debt charges on any notes issued in anticipation of those bonds?

FOR THE BOND ISSUE

**AGAINST THE BOND
ISSUE**

**5.) PROPOSED TAX LEVY
(ADDITIONAL)
TOWNSHIP OF DELHI**

A majority affirmative vote is necessary for passage.

An additional tax for the benefit of Township of Delhi for the purpose of providing fire and emergency medical services that the county auditor estimates will collect \$2,345,268 annually, at a rate not exceeding 3.2 mills for each \$1 of taxable value, which amounts to \$112 for each \$100,000 of the county auditor's appraised value, for a continuing period of time, commencing in 2026, first due in calendar year 2027.

FOR THE TAX LEVY

**AGAINST THE TAX
LEVY**

END OF BALLOT (5/5/2026)

Alex Triantafilou
Joseph M. Kelly CHM (undated)

**Instructions to Voter:
To Vote: completely
darken the box to the
left of your choice.
Please use a black or
blue ink pen only.**

Correct

Incorrect



- Note the permitted number of choices directly below the title of each candidate office. Do not mark the ballot for more choices than allowed.
- If you mark the ballot for more choices than permitted, that contest or question will not be counted.
- To vote for a write-in candidate: completely darken the box to the left of the blank line and write in the candidate's name. Only votes cast for candidates who filed as write-in candidates can be counted.
- Do not write-in a candidate's name if that person's name is already printed on the ballot for that same contest.
- If you make a mistake or want to change your vote: return your ballot to an election official and get a new ballot. You may ask for a new ballot up to two times.

**Instructions to Voters for
Governor and Lieutenant
Governor: To vote for
Governor and Lieutenant
Governor, darken the box
at the left of the joint
candidates of your choice.**

**For Governor and Lieutenant
Governor**

(Vote for not more than 1)

Heather Hill and Stuart
Moats

Casey Putsch and
Kimberly C. Georgetown

Vivek Ramaswamy and
Robert A. McColley

For Attorney General

(Vote for not more than 1)

Keith Faber

For Auditor of State

(Vote for not more than 1)

Frank LaRose

For Secretary of State

(Vote for not more than 1)

Robert Sprague

Marcell Strbich

For Treasurer of State

(Vote for not more than 1)

Jay Edwards

Kristina D. Roegner

**For Justice of the Supreme
Court (Full term
commencing 1-1-2027)**

(Vote for not more than 1)

Daniel R. Hawkins

**For Justice of the Supreme
Court (Full term
commencing 1-2-2027)**

(Vote for not more than 1)

Andrew King

Jill Lanzinger

Ronald Lewis

Colleen O'Donnell

**For U.S. Senator (Unexpired
term ending 1-3-2029)**

(Vote for not more than 1)

Jon Husted

**For Representative to
Congress (1st District)**

(Vote for not more than 1)

Holly Adams

Eric Conroy

Steven Erbeck

Rosemary Oglesby-
Henry

**For Representative to
Congress (8th District)**

(Vote for not more than 1)

Warren Davidson

**For State Senator (7th
District)**

(Vote for not more than 1)

Zac Haines

Kim Lukens

**For State Senator (9th
District)**

(Vote for not more than 1)

Write-in

**For State Representative
(24th District)**

(Vote for not more than 1)

No Valid Petition Filed

Read Both Sides of the Ballot

**For State Representative
(25th District)**
(Vote for not more than 1)
No Valid Petition Filed

**For State Representative
(26th District)**
(Vote for not more than 1)
 Tom Brinkman

**For State Representative
(27th District)**
(Vote for not more than 1)
 Elizabeth Rod Maier

**For State Representative
(28th District)**
(Vote for not more than 1)
 Jill Cole

**For State Representative
(29th District)**
(Vote for not more than 1)
 Cindy Abrams

**For State Representative
(30th District)**
(Vote for not more than 1)
 Mike Odioso

**For Member of State Central
Committee, Man (7th
District)**
(Vote for not more than 1)
 Jonathan Dever
 Christian Michael Mays

**For Member of State Central
Committee, Man (8th
District)**
(Vote for not more than 1)
 Curt C. Hartman
 Alex M. Triantafilou

**For Member of State Central
Committee, Man (9th
District)**
(Vote for not more than 1)
 John Capannari
 Russ Mock

**For Member of State Central
Committee, Woman (7th
District)**
(Vote for not more than 1)
 Diane Cunningham
Redden

**For Member of State Central
Committee, Woman (8th
District)**
(Vote for not more than 1)
 Linda S. Caudill
 Michelle G. Schneider

**For Member of State Central
Committee, Woman (9th
District)**
(Vote for not more than 1)
 Mary Elizabeth Egbers
 Becky A. Foster
 Linda Matthews

**For Judge of the Court of
Appeals (1st District) (Full
term commencing 2-9-2027)**
(Vote for not more than 1)
No Valid Petition Filed

**For Judge of the Court of
Common Pleas (Full term
commencing 1-1-2027)**
(Vote for not more than 1)
 Katie Casch

**For Judge of the Court of
Common Pleas (Full term
commencing 1-2-2027)**
(Vote for not more than 1)
 Betsy Sundermann

**For Judge of the Court of
Common Pleas (Full term
commencing 1-4-2027)**
(Vote for not more than 1)
No Valid Petition Filed

**For Judge of the Court of
Common Pleas (Full term
commencing 2-9-2027)**
(Vote for not more than 1)
 Roger Bouchard

**For Judge of the Court of
Common Pleas (Full term
commencing 2-10-2027)**
(Vote for not more than 1)
 Dennis Charles
Mahoney

**For Judge of the Court of
Common Pleas (Full term
commencing 2-11-2027)**
(Vote for not more than 1)
 Robert A. Goering

**For Judge of the Court of
Common Pleas (Full term
commencing 2-12-2027)**
(Vote for not more than 1)
No Valid Petition Filed

**For Judge of the Court of
Common Pleas (Full term
commencing 2-13-2027)**
(Vote for not more than 1)
No Valid Petition Filed

**For Judge of the Court of
Common Pleas (Drug Court)
(Full term commencing
1-3-2027)**
(Vote for not more than 1)
No Valid Petition Filed

**For Judge of the Court of
Common Pleas (Probate
Division) (Full term
commencing 2-9-2027)**
(Vote for not more than 1)
 Ralph Winkler

**For Judge of the Court of
Common Pleas (Juvenile
Division) (Full term
commencing 2-14-2027)**
(Vote for not more than 1)
 Susan Luken

**For Judge of the Court of
Common Pleas (Dom Rel)
(Full term commencing
7-1-2027)**
(Vote for not more than 1)
No Valid Petition Filed

**For Judge of the Court of
Common Pleas (Unexpired
term ending 1-3-2029)**
(Vote for not more than 1)
 Chris McDowell

**For Judge of the Court of
Common Pleas (Unexpired
term ending 1-14-2029)**
(Vote for not more than 1)
 Leah Dinkelacker

For County Commissioner
(Vote for not more than 1)
 Jonathan Pearson

For County Auditor
(Vote for not more than 1)
No Valid Petition Filed

**For Member of County
Central Committee
CINCINNATI 1-B**
(Vote for not more than 1)
 E. Cameron Sagester

**For Member of County
Central Committee
CINCINNATI 1-D**
(Vote for not more than 1)

Write-in

**For Member of County
Central Committee
CINCINNATI 1-E**
(Vote for not more than 1)

Write-in

**For Member of County
Central Committee
CINCINNATI 1-H**
(Vote for not more than 1)

Write-in

**For Member of County
Central Committee
CINCINNATI 1-M**
(Vote for not more than 1)
 Barbara Dimmitt

**For Member of County
Central Committee
CINCINNATI 2-D**
(Vote for not more than 1)
 Debbie Flammer

**For Member of County
Central Committee
CINCINNATI 2-F**
(Vote for not more than 1)
 Evan Gray Nash

**For Member of County
Central Committee
CINCINNATI 2-I**
(Vote for not more than 1)
 Peter Schmid

**For Member of County
Central Committee
CINCINNATI 2-J**
(Vote for not more than 1)
 Shawn M. Dansby

**For Member of County
Central Committee
CINCINNATI 3-B**
(Vote for not more than 1)
 Lynn J. Tanner

**For Member of County
Central Committee
CINCINNATI 3-D**
(Vote for not more than 1)

Write-in

**For Member of County
Central Committee
CINCINNATI 4-A**
(Vote for not more than 1)

Write-in

**For Member of County
Central Committee
CINCINNATI 4-C**
(Vote for not more than 1)
 Susan Laing

**For Member of County
Central Committee
CINCINNATI 4-D**
(Vote for not more than 1)
 Thomas M. Frey

**For Member of County
Central Committee
CINCINNATI 4-F**
(Vote for not more than 1)
 Russ Mock

**For Member of County
Central Committee
CINCINNATI 4-G**
(Vote for not more than 1)
 Ina Z. Loftspring

**For Member of County
Central Committee
CINCINNATI 4-H**
(Vote for not more than 1)
 Nancy Lakes

**For Member of County
Central Committee
CINCINNATI 5-A**
(Vote for not more than 1)
 Greg Hartmann

Read Both Sides of the Ballot

For Member of County Central Committee CINCINNATI 5-B
(Vote for not more than 1)
 Christopher E. Press

For Member of County Central Committee CINCINNATI 5-C
(Vote for not more than 1)
 Martin Wilhelmy

For Member of County Central Committee CINCINNATI 5-D
(Vote for not more than 1)
 Amy Murray

For Member of County Central Committee CINCINNATI 5-E
(Vote for not more than 1)
 Todd L. Cooper, Jr.
 Jane Marie Perry

For Member of County Central Committee CINCINNATI 5-F
(Vote for not more than 1)
 Annah McDowell

For Member of County Central Committee CINCINNATI 5-G
(Vote for not more than 1)
 Carla J. Romanelli
 Margaret Wuellner

For Member of County Central Committee CINCINNATI 5-I
(Vote for not more than 1)
 Becky A. Foster

For Member of County Central Committee CINCINNATI 6-A
(Vote for not more than 1)
 Marcia Falk

For Member of County Central Committee CINCINNATI 7-E
(Vote for not more than 1)
 Thomas W. Condit

For Member of County Central Committee CINCINNATI 8-B
(Vote for not more than 1)
 Alexandra Quintaba

For Member of County Central Committee CINCINNATI 8-D
(Vote for not more than 1)
 Aaron Gillham

For Member of County Central Committee CINCINNATI 9-B
(Vote for not more than 1)

Write-in

For Member of County Central Committee CINCINNATI 11-A
(Vote for not more than 1)
 Cory Bowman

For Member of County Central Committee CINCINNATI 13-D
(Vote for not more than 1)

Write-in

For Member of County Central Committee CINCINNATI 13-E
(Vote for not more than 1)
 Judith Evans

For Member of County Central Committee CINCINNATI 14-H
(Vote for not more than 1)
 Mary Elizabeth Egbers

For Member of County Central Committee CINCINNATI 15-B
(Vote for not more than 1)

Write-in

For Member of County Central Committee CINCINNATI 15-I
(Vote for not more than 1)
 Michael Butterfield

For Member of County Central Committee CINCINNATI 19-A
(Vote for not more than 1)
 Andrew J. Gillen

For Member of County Central Committee CINCINNATI 20-B
(Vote for not more than 1)
 Gary E. Niehaus

For Member of County Central Committee CINCINNATI 20-C
(Vote for not more than 1)
 Julie Ann Oehler

For Member of County Central Committee CINCINNATI 20-D
(Vote for not more than 1)

Write-in

For Member of County Central Committee CINCINNATI 23-C
(Vote for not more than 1)
 Sarah E. Wolf

For Member of County Central Committee CINCINNATI 23-K
(Vote for not more than 1)

Write-in

For Member of County Central Committee CINCINNATI 23-N
(Vote for not more than 1)
 Erik Nebergall

For Member of County Central Committee CINCINNATI 23-O
(Vote for not more than 1)
 James Berns

For Member of County Central Committee CINCINNATI 23-Q
(Vote for not more than 1)
 Paul T. Sanner

For Member of County Central Committee CINCINNATI 25-C
(Vote for not more than 1)
 Sherry Poland

For Member of County Central Committee CINCINNATI 25-D
(Vote for not more than 1)

Write-in

For Member of County Central Committee CINCINNATI 25-E
(Vote for not more than 1)
 William W. Brown

For Member of County Central Committee CINCINNATI 25-F
(Vote for not more than 1)
 Todd J. Zinser

For Member of County Central Committee CINCINNATI 25-G
(Vote for not more than 1)
 Tim J. Dornbusch

For Member of County Central Committee CINCINNATI 25-I
(Vote for not more than 1)
 James Edward Kiefer

For Member of County Central Committee CINCINNATI 26-A
(Vote for not more than 1)

Write-in

For Member of County Central Committee CINCINNATI 26-J
(Vote for not more than 1)

Write-in

For Member of County Central Committee CINCINNATI 26-K
(Vote for not more than 1)
 John A. Sess

For Member of County Central Committee CINCINNATI 26-O
(Vote for not more than 1)
 Jim McNulty

For Member of County Central Committee CINCINNATI 26-Q
(Vote for not more than 1)

Write-in

For Member of County Central Committee BLUE ASH 1-B
(Vote for not more than 1)
 Daniel T. Deters

For Member of County Central Committee BLUE ASH 2-A
(Vote for not more than 1)
 Marcallene Shockey

For Member of County Central Committee BLUE ASH 2-C
(Vote for not more than 1)
 Lee E. Czerwonka

For Member of County Central Committee BLUE ASH 3-A
(Vote for not more than 1)
 Linda Bryan

Write-in

For Member of County Central Committee BLUE ASH 3-B
(Vote for not more than 1)
 Joe Hoelker

For Member of County Central Committee BLUE ASH 4-A
(Vote for not more than 1)
 Carol J. Buckman

For Member of County Central Committee BLUE ASH 5-A
(Vote for not more than 1)
 Larry Bresko

For Member of County Central Committee BLUE ASH 5-B
(Vote for not more than 1)
 Sheldon F. Sheff

For Member of County Central Committee DEER PARK 1-A
(Vote for not more than 1)
 Laura Hughes

For Member of County Central Committee DEER PARK 2-A
(Vote for not more than 1)
 Shaughn Daily

Read Both Sides of the Ballot

For Member of County Central Committee DEER PARK 3-A
(Vote for not more than 1)
 Natasha L. Kohorst

For Member of County Central Committee DEER PARK 4-A
(Vote for not more than 1)
 Christine M. Westmark

For Member of County Central Committee FOREST PARK B
(Vote for not more than 1)
 Cherise Wilson

For Member of County Central Committee HARRISON A
(Vote for not more than 1)
 Jeff M. Guilfoyle

For Member of County Central Committee HARRISON B
(Vote for not more than 1)
 Craig Whitham

For Member of County Central Committee HARRISON C
(Vote for not more than 1)
 Jerrold W. Wilson

For Member of County Central Committee HARRISON D
(Vote for not more than 1)
 Cindy Abrams

For Member of County Central Committee HARRISON E
(Vote for not more than 1)
 Andrew Graf

For Member of County Central Committee HARRISON G
(Vote for not more than 1)
 Danielle N. Noel

For Member of County Central Committee INDIAN HILL C
(Vote for not more than 1)
 George H. Vincent

For Member of County Central Committee INDIAN HILL D
(Vote for not more than 1)
 Marcie Longenecker

For Member of County Central Committee INDIAN HILL E
(Vote for not more than 1)
 Sean P. Callan

For Member of County Central Committee INDIAN HILL F
(Vote for not more than 1)
 Mike Ruehlman

For Member of County Central Committee LOVELAND A
(Vote for not more than 1)
 Ted Phelps

For Member of County Central Committee LOVELAND B
(Vote for not more than 1)
 Kathy Bailey

For Member of County Central Committee LOVELAND C
(Vote for not more than 1)

Write-in

For Member of County Central Committee LOVELAND D
(Vote for not more than 1)
 Kip Ping

For Member of County Central Committee LOVELAND E
(Vote for not more than 1)
 Catherine B. Collett

For Member of County Central Committee LOVELAND F
(Vote for not more than 1)
 David Black

For Member of County Central Committee LOVELAND G
(Vote for not more than 1)
 David Parker

For Member of County Central Committee MADEIRA D
(Vote for not more than 1)
 Jay R. Groenke

For Member of County Central Committee MADEIRA E
(Vote for not more than 1)

Write-in

For Member of County Central Committee MADEIRA F
(Vote for not more than 1)

Write-in

For Member of County Central Committee MADEIRA H
(Vote for not more than 1)
 Doug Moormann

For Member of County Central Committee MONTGOMERY A
(Vote for not more than 1)
 Delores Jacobson

For Member of County Central Committee MONTGOMERY B
(Vote for not more than 1)
 Bonnie Bernard

For Member of County Central Committee MONTGOMERY C
(Vote for not more than 1)
 Albert G. Brauer II

For Member of County Central Committee MONTGOMERY D
(Vote for not more than 1)
 Brian J. Hue

For Member of County Central Committee MONTGOMERY E
(Vote for not more than 1)
 Jeff Boyle

For Member of County Central Committee MONTGOMERY F
(Vote for not more than 1)
 Guillermo Gonzalez

For Member of County Central Committee MONTGOMERY H
(Vote for not more than 1)
 John F. Sullivan

For Member of County Central Committee MONTGOMERY I
(Vote for not more than 1)
 Bari L. Colebrook

For Member of County Central Committee MT HEALTHY 3-A
(Vote for not more than 1)
 Paul Young III

For Member of County Central Committee NORWOOD 1-A
(Vote for not more than 1)
 Tonya Wallace-Mullins

For Member of County Central Committee NORWOOD 1-B
(Vote for not more than 1)
 Nathan Atwood

For Member of County Central Committee NORWOOD 1-C
(Vote for not more than 1)
 Ken Miracle

For Member of County Central Committee NORWOOD 2-A
(Vote for not more than 1)
 Jon Atwood

For Member of County Central Committee NORWOOD 2-B
(Vote for not more than 1)
 Chad Eaton

For Member of County Central Committee NORWOOD 3-C
(Vote for not more than 1)
 Robert A. Hill

For Member of County Central Committee NORWOOD 4-A
(Vote for not more than 1)
 Paul M. Smith

For Member of County Central Committee NORWOOD 4-C
(Vote for not more than 1)
 Kimberely A. Brucker

For Member of County Central Committee READING 1-A
(Vote for not more than 1)
 Susan M. Slavey

For Member of County Central Committee READING 1-B
(Vote for not more than 1)
 Dwight Daum

For Member of County Central Committee READING 2-A
(Vote for not more than 1)
 Jeff Fischesser
 Anthony J. Gertz

For Member of County Central Committee READING 2-B
(Vote for not more than 1)
 Bonnie Rack

For Member of County Central Committee READING 3-A
(Vote for not more than 1)
 Robert P. Bemmes

For Member of County Central Committee READING 3-B
(Vote for not more than 1)
 Melvin T. Gertz

For Member of County Central Committee READING 4-B
(Vote for not more than 1)
 Susan M. Rinderle

Read Both Sides of the Ballot

For Member of County Central Committee SHARONVILLE 1-A
(Vote for not more than 1)
 Angia Aulds

For Member of County Central Committee SHARONVILLE 1-B
(Vote for not more than 1)
 G. Michael Chaney

For Member of County Central Committee SHARONVILLE 2-A
(Vote for not more than 1)
 Michael Connaughton

For Member of County Central Committee SHARONVILLE 3-A
(Vote for not more than 1)
 Gary J. Howard

For Member of County Central Committee SHARONVILLE 3-B
(Vote for not more than 1)
 Virgil G. Lovitt II

For Member of County Central Committee SHARONVILLE 4-A
(Vote for not more than 1)
 Mark Piepmeier

For Member of County Central Committee SHARONVILLE 4-B
(Vote for not more than 1)
 Courtney L. Thal

For Member of County Central Committee SPRINGDALE B
(Vote for not more than 1)
 Estel E. Kerns

For Member of County Central Committee WYOMING A
(Vote for not more than 1)

Write-in

For Member of County Central Committee WYOMING B
(Vote for not more than 1)
 Christa M. Criddle

For Member of County Central Committee WYOMING C
(Vote for not more than 1)

Write-in

For Member of County Central Committee WYOMING D
(Vote for not more than 1)

Write-in

For Member of County Central Committee WYOMING E
(Vote for not more than 1)

Write-in

For Member of County Central Committee AMBERLEY A
(Vote for not more than 1)

Write-in

For Member of County Central Committee ANDERSON A
(Vote for not more than 1)

Write-in

For Member of County Central Committee ANDERSON B
(Vote for not more than 1)
 Daniel F. Wolfangel

For Member of County Central Committee ANDERSON C
(Vote for not more than 1)

Write-in

For Member of County Central Committee ANDERSON E
(Vote for not more than 1)
 Jim Perry

For Member of County Central Committee ANDERSON F
(Vote for not more than 1)
 Russelyn Halvorsen

For Member of County Central Committee ANDERSON G
(Vote for not more than 1)
 Eric J. Nolan

For Member of County Central Committee ANDERSON I
(Vote for not more than 1)

Write-in

For Member of County Central Committee ANDERSON J
(Vote for not more than 1)
 Andrew S. Pappas

For Member of County Central Committee ANDERSON K
(Vote for not more than 1)
 Roger L. Noe

For Member of County Central Committee ANDERSON L
(Vote for not more than 1)

Write-in

For Member of County Central Committee ANDERSON M
(Vote for not more than 1)
 Brian M. Johnson

For Member of County Central Committee ANDERSON P
(Vote for not more than 1)
 Brian Sanders

For Member of County Central Committee ANDERSON Q
(Vote for not more than 1)
 Write-in

For Member of County Central Committee ANDERSON R
(Vote for not more than 1)
 Chip Gerhardt

For Member of County Central Committee ANDERSON S
(Vote for not more than 1)
 Write-in

For Member of County Central Committee ANDERSON T
(Vote for not more than 1)
 Write-in

For Member of County Central Committee ANDERSON U
(Vote for not more than 1)
 Josh Gerth

For Member of County Central Committee ANDERSON V
(Vote for not more than 1)
 Write-in

For Member of County Central Committee ANDERSON W
(Vote for not more than 1)
 Kevin Comerford

For Member of County Central Committee ANDERSON X
(Vote for not more than 1)
 Write-in

For Member of County Central Committee ANDERSON Z
(Vote for not more than 1)
 Daniel A. Katt

For Member of County Central Committee ANDERSON BB
(Vote for not more than 1)
 Dennis Jason Kiefer
 Donald Wegman

For Member of County Central Committee ANDERSON CC
(Vote for not more than 1)
 Michael Fullen

For Member of County Central Committee ANDERSON DD
(Vote for not more than 1)
 Vicki Abbott

For Member of County Central Committee ANDERSON EE
(Vote for not more than 1)
 Harold Johnson

For Member of County Central Committee ANDERSON FF
(Vote for not more than 1)
 Write-in

For Member of County Central Committee COLERAIN A
(Vote for not more than 1)
 Dennis R. Mason

For Member of County Central Committee COLERAIN C
(Vote for not more than 1)
 Write-in

For Member of County Central Committee COLERAIN D
(Vote for not more than 1)
 Write-in

For Member of County Central Committee COLERAIN E
(Vote for not more than 1)
 Michael K. Harlow

For Member of County Central Committee COLERAIN F
(Vote for not more than 1)
 George Brunemann

For Member of County Central Committee COLERAIN G
(Vote for not more than 1)
 Dan Unger

For Member of County Central Committee COLERAIN H
(Vote for not more than 1)
 Jeff Baker

For Member of County Central Committee COLERAIN I
(Vote for not more than 1)
 Douglas A. Michel

Read Both Sides of the Ballot

For Member of County Central Committee COLERAIN J
(Vote for not more than 1)
 David M. Veeneman

For Member of County Central Committee COLERAIN L
(Vote for not more than 1)
 Thomas N. Inderhees

For Member of County Central Committee COLERAIN N
(Vote for not more than 1)

Write-in

For Member of County Central Committee COLERAIN Q
(Vote for not more than 1)
 Jeff Ritter

For Member of County Central Committee COLERAIN R
(Vote for not more than 1)
 Andrew Masur

For Member of County Central Committee COLERAIN S
(Vote for not more than 1)
 Keith Niles Corman

For Member of County Central Committee COLERAIN V
(Vote for not more than 1)
 Heather N. Blessing

For Member of County Central Committee COLERAIN W
(Vote for not more than 1)

Write-in

For Member of County Central Committee COLERAIN Z
(Vote for not more than 1)
 Michael Evangelo

For Member of County Central Committee COLERAIN AA
(Vote for not more than 1)
 Daniel P. Meloy

For Member of County Central Committee COLERAIN BB
(Vote for not more than 1)

Write-in

For Member of County Central Committee COLERAIN EE
(Vote for not more than 1)
 Eugene Brockert

For Member of County Central Committee COLERAIN FF
(Vote for not more than 1)

Write-in

For Member of County Central Committee COLUMBIA A
(Vote for not more than 1)

Write-in

For Member of County Central Committee COLUMBIA G
(Vote for not more than 1)

Write-in

For Member of County Central Committee DELHI A
(Vote for not more than 1)

Write-in

For Member of County Central Committee DELHI B
(Vote for not more than 1)

Write-in

For Member of County Central Committee DELHI C
(Vote for not more than 1)

Write-in

For Member of County Central Committee DELHI D
(Vote for not more than 1)
 Gary R. Ott

For Member of County Central Committee DELHI E
(Vote for not more than 1)
 Gerard G. Holthaus

For Member of County Central Committee DELHI G
(Vote for not more than 1)
 Linda S. Caudill

For Member of County Central Committee DELHI H
(Vote for not more than 1)
 Cheryl A. Sieve

For Member of County Central Committee DELHI I
(Vote for not more than 1)

Write-in

For Member of County Central Committee DELHI J
(Vote for not more than 1)

Write-in

For Member of County Central Committee DELHI K
(Vote for not more than 1)

Write-in

For Member of County Central Committee DELHI L
(Vote for not more than 1)
 Elizabeth A. Burwell

For Member of County Central Committee DELHI M
(Vote for not more than 1)
 Hayley Dressler

For Member of County Central Committee DELHI N
(Vote for not more than 1)

Write-in

For Member of County Central Committee DELHI O
(Vote for not more than 1)
 Charles A. Eckert III

For Member of County Central Committee DELHI P
(Vote for not more than 1)

Write-in

For Member of County Central Committee DELHI Q
(Vote for not more than 1)

Write-in

For Member of County Central Committee DELHI S
(Vote for not more than 1)
 Kristie Cornelius

For Member of County Central Committee ELMWOOD A
(Vote for not more than 1)

Write-in

For Member of County Central Committee EVENDALE A
(Vote for not more than 1)
 Stiney Vonderhaar

For Member of County Central Committee EVENDALE B
(Vote for not more than 1)
 Diane Cunningham Redden

For Member of County Central Committee EVENDALE C
(Vote for not more than 1)
 Thomas J. Stautberg

For Member of County Central Committee FAIRFAX A
(Vote for not more than 1)

Write-in

For Member of County Central Committee GLENDALE B
(Vote for not more than 1)
 Jenny Kilgore

For Member of County Central Committee GREEN A
(Vote for not more than 1)
 Kevin A. Ward

For Member of County Central Committee GREEN C
(Vote for not more than 1)
 Nancy Jo Slattery

For Member of County Central Committee GREEN E
(Vote for not more than 1)
 Paul Schiele

For Member of County Central Committee GREEN H
(Vote for not more than 1)
 Carrie L. Mees

For Member of County Central Committee GREEN J
(Vote for not more than 1)

Write-in

For Member of County Central Committee GREEN M
(Vote for not more than 1)
 Anne Murphy

For Member of County Central Committee GREEN N
(Vote for not more than 1)

Write-in

For Member of County Central Committee GREEN P
(Vote for not more than 1)
 Tracy Winkler

For Member of County Central Committee GREEN R
(Vote for not more than 1)
 Anthony Auciello

For Member of County Central Committee GREEN U
(Vote for not more than 1)
 Bruce Bingle

For Member of County Central Committee GREEN V
(Vote for not more than 1)
 Allison Detzel

For Member of County Central Committee GREEN W
(Vote for not more than 1)

Write-in

For Member of County Central Committee GREEN X
(Vote for not more than 1)
 Triffon Callos

For Member of County Central Committee GREEN Y
(Vote for not more than 1)
 David M. Pittinger

For Member of County Central Committee GREEN Z
(Vote for not more than 1)
 Mary H. Kuhl

Read Both Sides of the Ballot

For Member of County Central Committee GREEN DD
(Vote for not more than 1)

Write-in

For Member of County Central Committee GREEN GG
(Vote for not more than 1)
 Alex M. Triantafilou

For Member of County Central Committee GREEN HH
(Vote for not more than 1)

Write-in

For Member of County Central Committee GREEN JJ
(Vote for not more than 1)

Write-in

For Member of County Central Committee GREEN KK
(Vote for not more than 1)
 Dave Holmstrom

For Member of County Central Committee GREEN LL
(Vote for not more than 1)

Write-in

For Member of County Central Committee GREEN MM
(Vote for not more than 1)
 Samuel Geroulis

For Member of County Central Committee GREEN NN
(Vote for not more than 1)

Write-in

For Member of County Central Committee GREEN OO
(Vote for not more than 1)
 Angie Lawson

For Member of County Central Committee GREEN PP
(Vote for not more than 1)
 Thomas J. Straus

For Member of County Central Committee GREEN QQ
(Vote for not more than 1)
 John F. Cullum

For Member of County Central Committee GREENHILLS A
(Vote for not more than 1)
 Jeffrey T. Halter

For Member of County Central Committee GREENHILLS B
(Vote for not more than 1)
 Kenny R. Burck

For Member of County Central Committee GREENHILLS C
(Vote for not more than 1)
 Gregory F. Hermes

For Member of County Central Committee HARR TWP CC
(Vote for not more than 1)
 Jon J. Halusek

For Member of County Central Committee MARIEMONT A
(Vote for not more than 1)
 Kenneth White

For Member of County Central Committee MARIEMONT B
(Vote for not more than 1)
 Dean H. Clingerman

For Member of County Central Committee ADDYSTON A
(Vote for not more than 1)
 Margaret Ann Dozier

For Member of County Central Committee CLEVES A
(Vote for not more than 1)
 Judith Boyce
 Dana Westrich

For Member of County Central Committee CLEVES B
(Vote for not more than 1)
 Dana Davis
 Ryan P. McDonald

For Member of County Central Committee NORTH BEND A
(Vote for not more than 1)
 Robert P. Ruehlman

For Member of County Central Committee MIAMI TWP A
(Vote for not more than 1)
 Patrick Cagney
 Zachary D. Fischesser

For Member of County Central Committee MIAMI TWP B
(Vote for not more than 1)
 Richard Bell
 Julie M. Thacker

For Member of County Central Committee MIAMI TWP C
(Vote for not more than 1)
 M. Christine Ruehl

For Member of County Central Committee MIAMI TWP D
(Vote for not more than 1)
 Dan Blanton

For Member of County Central Committee MIAMI TWP E
(Vote for not more than 1)
 Mike Robison
 Nicole M. Stenger

For Member of County Central Committee MIAMI TWP F
(Vote for not more than 1)
 Timothy Harvey
 Andy Stafford

For Member of County Central Committee MIAMI TWP G
(Vote for not more than 1)
 Timothy M. Vollrath

For Member of County Central Committee MIAMI TWP H
(Vote for not more than 1)
 Liza A. Shaw

For Member of County Central Committee MIAMI TWP I
(Vote for not more than 1)
 Brent Daniels
 Mary Sue Emerson

For Member of County Central Committee NEWTOWN B
(Vote for not more than 1)
 John P. Henges

For Member of County Central Committee SILVERTON C
(Vote for not more than 1)
 Mark Quarry

For Member of County Central Committee SPRINGFIELD G
(Vote for not more than 1)
 Cassandra Brown

For Member of County Central Committee SPRINGFIELD M
(Vote for not more than 1)
 Pamela Helscher

For Member of County Central Committee SPRINGFIELD R
(Vote for not more than 1)

Write-in

For Member of County Central Committee SPRINGFIELD U
(Vote for not more than 1)
 Joseph Honerlaw

For Member of County Central Committee SPRINGFIELD W
(Vote for not more than 1)
 Dan J. Berning

For Member of County Central Committee SPRINGFIELD Z
(Vote for not more than 1)

Write-in

For Member of County Central Committee SYCAMORE A
(Vote for not more than 1)
 Michael Roetker

For Member of County Central Committee SYCAMORE B
(Vote for not more than 1)
 Sarah Fortin
 Edward Price

For Member of County Central Committee SYCAMORE C
(Vote for not more than 1)
 Doug McGrew

For Member of County Central Committee SYCAMORE D
(Vote for not more than 1)
 Tom Weidman

For Member of County Central Committee SYCAMORE E
(Vote for not more than 1)
 Terry S. Tipton

For Member of County Central Committee SYCAMORE F
(Vote for not more than 1)
 Jonathan T. Deters

For Member of County Central Committee SYCAMORE G
(Vote for not more than 1)
 Tracy Lynn Schwegmann

For Member of County Central Committee SYCAMORE H
(Vote for not more than 1)
 Frank Kanyuck, Jr.

Read Both Sides of the Ballot

For Member of County Central Committee SYCAMORE I
(Vote for not more than 1)
 Matthew T. Blair
 Jim Eichmann

For Member of County Central Committee SYCAMORE J
(Vote for not more than 1)
 John M. Todd

For Member of County Central Committee SYCAMORE K
(Vote for not more than 1)
 Mary Anne Christie

For Member of County Central Committee SYCAMORE L
(Vote for not more than 1)
 Tracy Kellums

For Member of County Central Committee SYCAMORE M
(Vote for not more than 1)
 John L. O'Shea

For Member of County Central Committee SYCAMORE N
(Vote for not more than 1)
 Kevin Michael Clark

For Member of County Central Committee SYMMES B
(Vote for not more than 1)

Write-in

For Member of County Central Committee SYMMES C
(Vote for not more than 1)

Write-in

For Member of County Central Committee SYMMES D
(Vote for not more than 1)
 Zac Haines

For Member of County Central Committee SYMMES F
(Vote for not more than 1)
 David W. Heimbach

For Member of County Central Committee SYMMES G
(Vote for not more than 1)

Write-in

For Member of County Central Committee SYMMES L
(Vote for not more than 1)
 James T. Benedict
 Jenn Giroux

For Member of County Central Committee TERRACE PARK A
(Vote for not more than 1)
 Jay Gohman

For Member of County Central Committee WHITEWATER B
(Vote for not more than 1)
 Guy Schaible

For Member of County Central Committee WHITEWATER C
(Vote for not more than 1)
 James L. Brett

For Member of County Central Committee WOODLAWN A
(Vote for not more than 1)
 Mary L. Hill

1.) PROPOSED INCOME TAX MT. HEALTHY CITY SCHOOL DISTRICT

A majority affirmative vote is necessary for passage.

Shall an annual income tax of 0.75 percent on the earned income of individuals residing in the school district be imposed by Mt. Healthy City School District, for a continuing period of time, beginning January 1, 2027, for the purpose of current expenses?

FOR THE TAX

AGAINST THE TAX

2.) PROPOSED INCOME TAX NORTH COLLEGE HILL CITY SCHOOL DISTRICT

A majority affirmative vote is necessary for passage.

Shall an annual income tax of 1.25 percent on the earned income of individuals residing in the school district be imposed by North College Hill City School District, for 5 years, beginning January 1, 2027, for the purpose of current expenses?

FOR THE TAX

AGAINST THE TAX

3.) PROPOSED TAX LEVY (ADDITIONAL) SOUTHWEST LOCAL SCHOOL DISTRICT

A majority affirmative vote is necessary for passage.

An additional tax for the benefit of Southwest Local School District for the purpose of current expenses that the county auditor estimates will collect \$4,385,053 annually, at a rate not exceeding 4 mills for each \$1 of taxable value, which amounts to \$140 for each \$100,000 of the county auditor's appraised value, for 5 years, commencing in 2026, first due in calendar year 2027.

FOR THE TAX LEVY

AGAINST THE TAX LEVY

**4.) PROPOSED BOND ISSUE
CITY OF READING**

A majority affirmative vote is necessary for passage.

Shall bonds be issued by the City of Reading for the purpose of site acquisition, new construction, improvements, renovations and additions to municipal facilities and providing equipment, furnishings and site improvements therefor, in the principal amount of \$27,000,000, to be repaid annually over a maximum period of 28 years, and an annual levy of property taxes be made outside the ten-mill limitation, estimated by the county auditor to average over the repayment period of the bond issue 5.89 mills for each \$1 of taxable value, which amounts to \$206 for each \$100,000 of the county auditor's market value, commencing in 2026, first due in calendar year 2027, to pay the annual debt charges on the bonds, and to pay debt charges on any notes issued in anticipation of those bonds?

FOR THE BOND ISSUE

AGAINST THE BOND ISSUE

**5.) PROPOSED TAX LEVY
(ADDITIONAL)
TOWNSHIP OF DELHI**

A majority affirmative vote is necessary for passage.

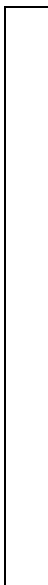
An additional tax for the benefit of Township of Delhi for the purpose of providing fire and emergency medical services that the county auditor estimates will collect \$2,345,268 annually, at a rate not exceeding 3.2 mills for each \$1 of taxable value, which amounts to \$112 for each \$100,000 of the county auditor's appraised value, for a continuing period of time, commencing in 2026, first due in calendar year 2027.

FOR THE TAX LEVY

AGAINST THE TAX LEVY

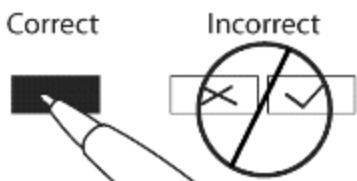
END OF BALLOT (5/5/2026)

Alex Triantafilou
Joseph M. Mallory, C.H. Auditor



This page intentionally left blank

**Instructions to Voter:
To Vote: completely
darken the box to the
left of your choice.
Please use a black or
blue ink pen only.**



- Note the permitted number of choices directly below the title of each candidate office. Do not mark the ballot for more choices than allowed.
- If you mark the ballot for more choices than permitted, that contest or question will not be counted.
- To vote for a write-in candidate: completely darken the box to the left of the blank line and write in the candidate's name. Only votes cast for candidates who filed as write-in candidates can be counted.
- Do not write-in a candidate's name if that person's name is already printed on the ballot for that same contest.
- If you make a mistake or want to change your vote: return your ballot to an election official and get a new ballot. You may ask for a new ballot up to two times.

**Instructions to Voters for
Governor and Lieutenant
Governor: To vote for
Governor and Lieutenant
Governor, darken the box
at the left of the joint
candidates of your choice.**

**For Governor and Lieutenant
Governor**

(Vote for not more than 1)

Don Kissick and James
L. Mills

Write-in

For Auditor of State

(Vote for not more than 1)

Write-in

For Secretary of State

(Vote for not more than 1)

Tom Pruss

**For U.S. Senator (Unexpired
term ending 1-3-2029)**

(Vote for not more than 1)

Jeffrey M. Kanter

William B. Redpath

**For Representative to
Congress (1st District)**

(Vote for not more than 1)

John D. Hancock, Jr.

Write-in

**For Member of County
Central Committee CHEVIOT
1-A**

(Vote for not more than 1)

Kyle P. Dupler

**1.) PROPOSED INCOME TAX
MT. HEALTHY CITY SCHOOL
DISTRICT**

**A majority affirmative vote is
necessary for passage.**

Shall an annual income tax of 0.75
percent on the earned income of
individuals residing in the school

district be imposed by Mt. Healthy
City School District, for a continuing
period of time, beginning January 1,
2027, for the purpose of current
expenses?

FOR THE TAX

AGAINST THE TAX

**2.) PROPOSED INCOME TAX
NORTH COLLEGE HILL CITY
SCHOOL DISTRICT**

**A majority affirmative vote is
necessary for passage.**

Shall an annual income tax of 1.25
percent on the earned income of
individuals residing in the school
district be imposed by North
College Hill City School District, for
5 years, beginning January 1, 2027,
for the purpose of current
expenses?

FOR THE TAX

AGAINST THE TAX

**3.) PROPOSED TAX LEVY
(ADDITIONAL)
SOUTHWEST LOCAL SCHOOL
DISTRICT**

**A majority affirmative vote is
necessary for passage.**

An additional tax for the benefit of
Southwest Local School District for
the purpose of current expenses
that the county auditor estimates
will collect \$4,385,053 annually, at a
rate not exceeding 4 mills for each
\$1 of taxable value, which amounts
to \$140 for each \$100,000 of the
county auditor's appraised value,
for 5 years, commencing in 2026,
first due in calendar year 2027.

FOR THE TAX LEVY

AGAINST THE TAX
LEVY

Read Both Sides of the Ballot

**4.) PROPOSED BOND ISSUE
CITY OF READING**

A majority affirmative vote is necessary for passage.

Shall bonds be issued by the City of Reading for the purpose of site acquisition, new construction, improvements, renovations and additions to municipal facilities and providing equipment, furnishings and site improvements therefor, in the principal amount of \$27,000,000, to be repaid annually over a maximum period of 28 years, and an annual levy of property taxes be made outside the ten-mill limitation, estimated by the county auditor to average over the repayment period of the bond issue 5.89 mills for each \$1 of taxable value, which amounts to \$206 for each \$100,000 of the county auditor's market value, commencing in 2026, first due in calendar year 2027, to pay the annual debt charges on the bonds, and to pay debt charges on any notes issued in anticipation of those bonds?

FOR THE BOND ISSUE

AGAINST THE BOND ISSUE

**5.) PROPOSED TAX LEVY
(ADDITIONAL)
TOWNSHIP OF DELHI**

A majority affirmative vote is necessary for passage.

An additional tax for the benefit of Township of Delhi for the purpose of providing fire and emergency medical services that the county auditor estimates will collect \$2,345,268 annually, at a rate not exceeding 3.2 mills for each \$1 of taxable value, which amounts to \$112 for each \$100,000 of the county auditor's appraised value, for a continuing period of time, commencing in 2026, first due in calendar year 2027.

FOR THE TAX LEVY

AGAINST THE TAX LEVY

END OF BALLOT (5/5/2026)

Alex Triantafilou
Joseph M. Mallory, C.H. Auditor

Instructions to Voter:
To Vote: completely darken the box to the left of your choice. Please use a black or blue ink pen only.

Correct

Incorrect



- Note the permitted number of choices directly below the title of each candidate office. Do not mark the ballot for more choices than allowed.
- If you mark the ballot for more choices than permitted, that contest or question will not be counted.
- To vote for a write-in candidate: completely darken the box to the left of the blank line and write in the candidate's name. Only votes cast for candidates who filed as write-in candidates can be counted.
- Do not write-in a candidate's name if that person's name is already printed on the ballot for that same contest.
- If you make a mistake or want to change your vote: return your ballot to an election official and get a new ballot. You may ask for a new ballot up to two times.

**1.) PROPOSED INCOME TAX
MT. HEALTHY CITY SCHOOL
DISTRICT**

A majority affirmative vote is necessary for passage.

Shall an annual income tax of 0.75 percent on the earned income of individuals residing in the school district be imposed by Mt. Healthy City School District, for a continuing period of time, beginning January 1, 2027, for the purpose of current expenses?

FOR THE TAX

AGAINST THE TAX

**2.) PROPOSED INCOME TAX
NORTH COLLEGE HILL CITY
SCHOOL DISTRICT**

A majority affirmative vote is necessary for passage.

Shall an annual income tax of 1.25 percent on the earned income of individuals residing in the school district be imposed by North College Hill City School District, for 5 years, beginning January 1, 2027, for the purpose of current expenses?

FOR THE TAX

AGAINST THE TAX

**3.) PROPOSED TAX LEVY
(ADDITIONAL)
SOUTHWEST LOCAL SCHOOL
DISTRICT**

A majority affirmative vote is necessary for passage.

An additional tax for the benefit of Southwest Local School District for the purpose of current expenses that the county auditor estimates will collect \$4,385,053 annually, at a rate not exceeding 4 mills for each \$1 of taxable value, which amounts to \$140 for each \$100,000 of the county auditor's appraised value, for 5 years, commencing in 2026, first due in calendar year 2027.

FOR THE TAX LEVY

**AGAINST THE TAX
LEVY**

**4.) PROPOSED BOND ISSUE
CITY OF READING**

A majority affirmative vote is necessary for passage.

Shall bonds be issued by the City of Reading for the purpose of site acquisition, new construction, improvements, renovations and additions to municipal facilities and providing equipment, furnishings and site improvements therefor, in the principal amount of \$27,000,000, to be repaid annually over a maximum period of 28 years, and an annual levy of property taxes be made outside the ten-mill limitation, estimated by the county auditor to average over the repayment period of the bond issue 5.89 mills for each \$1 of taxable value, which amounts to \$206 for each \$100,000 of the county auditor's market value, commencing in 2026, first due in calendar year 2027, to pay the annual debt charges on the bonds, and to pay debt charges on any notes issued in anticipation of those bonds?

FOR THE BOND ISSUE

**AGAINST THE BOND
ISSUE**

Read Both Sides of the Ballot

**5.) PROPOSED TAX LEVY
(ADDITIONAL)
TOWNSHIP OF DELHI**

**A majority affirmative vote
is necessary for passage.**

An additional tax for the benefit of Township of Delhi for the purpose of providing fire and emergency medical services that the county auditor estimates will collect \$2,345,268 annually, at a rate not exceeding 3.2 mills for each \$1 of taxable value, which amounts to \$112 for each \$100,000 of the county auditor's appraised value, for a continuing period of time, commencing in 2026, first due in calendar year 2027.

FOR THE TAX LEVY

**AGAINST THE TAX
LEVY**

END OF BALLOT (5/5/2026)

Alex Triantafilou
Joseph M. Mallory, C.H. (Auditor)